

What is eCrystal PSG Web Portal?

Our Web Portal offers prescribing physicians secure, HIPAA compliant, online access to patients' sleep test raw data, scoring by registered polysomnographic technologists, and professional interpretation with treatment recommendations by board-certified sleep physicians.

HIPAA Compliant

Offers secure connectivity to patient's sleep test data, scoring & interpretation.

AASM Compliant, Access to Raw Data

Proper sleep study interpretation with over-read by sleep technologists and board-certified sleep physicians.

Timely Delivery

Automatic email notifications.

Web Application

No need to email studies or reports.

Convenient

More comfort for patients, ease in testing. Cost benefits for the payer.

AASM Compliant Home Sleep Monitor

SleepView® records physiological data while the patient sleeps in the comfort of home, and works hand-in-hand with the eCrystal PSG web portal.



Expanding the reach of your sleep services today and tomorrow

1.877.CleveMed | 1.877.253.8363 | www.CleveMed.com/eCrystalPSG

CleveMed

■ ■ ■ ■ Cleveland Medical Devices Inc.

How It Works

Step One

Suspecting OSA, the physician determines patient's candidacy for home sleep testing. A home sleep test is ordered for the patient.



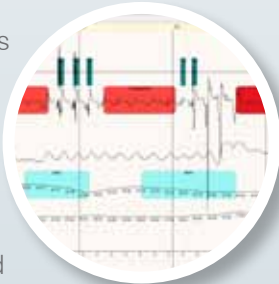
Step Two

Patient self-administers home sleep test in the comfort and convenience of their own home and bed.



Step Three

The patient's sleep test data is checked into the web portal and scored by an RPSGT.



Step Four

Every sleep test is then interpreted by a board-certified sleep physician. Sleep test reports are finalized with the overread and electronic signature of a board-certified Sleep Physician.



Step Five

Follow-up discussions are held with patient to evaluate their test results for treatment options and long-term management.



Service Package Options

The eCrystal PSG web portal is offered at three different service tiers to meet the needs of various customers.

Full Service

For customers not affiliated with a sleep center, eCrystal PSG can connect ordering physicians with qualified sleep specialists for study interpretation. CleveMed's qualified sleep technologists score the sleep studies, which can then be transferred to sleep physicians with appropriate state licensure for interpretation.

Web Portal + Scoring Service

Our mid tier service includes use of eCrystal PSG and study scoring. With this service a registered sleep technologist verifies the scoring and creates a draft of the report to be completed by a sleep physician.

Web Portal Basic Service

We also offer web portal use only. This service is used by centers that have personnel for scoring and interpretation but wish to take advantage of easy web access to the data. Sleep studies can be uploaded from the point of patient care.

SleepView® is manufactured by and a registered trademark of Cleveland Medical Devices Inc., licensed and distributed in the United States of America by Midmark Corporation. Learn more about Midmark SleepView at www.MidmarkSleepView.com

It is always the provider's responsibility to determine coverage and submit appropriate codes, modifiers, and charges for services rendered. Contact your local insurance carrier/payer for interpretation of appropriate coverage and coding policies. | Transmission distance varies based on the operating frequency and the building architecture. | Loaner units available for customers in the U.S. | Acknowledgments: This work was supported by Small Business Innovation Research grants from the National Institutes of Health (NINDS, NHLBI, NIMH) and the Department of Defense. | Caution: Federal law restricts this device to sale by or on the order of a physician only. | Crystal PSG, Sapphire PSG, SleepScout, DreamPort, and eCrystal PSG are trademarks and Crystal Monitor, and SleepView are registered trademarks of Cleveland Medical Devices Inc., Cleveland, OH. | Sapphire PSG, Crystal Monitor, SleepScout, SleepView, and DreamPort are FDA cleared to market.



Expanding the reach of your sleep services today and tomorrow

1.877.CleveMed | 1.877.253.8363 | www.CleveMed.com/eCrystalPSG

CleveMed

■ ■ ■ ■ Cleveland Medical Devices Inc.