

## What is Crystal Monitor PSG Series?

The simplicity of the Crystal Monitor system makes it uniquely suited for PSG sleep studies in non-traditional settings such as inpatient monitoring, hotels and home testing. A wireless Type II, 14 - channel PSG system with a complete PSG software package for a simple yet powerful clinical solution.

## Wireless and Portable

Records full PSG signals for Type II sleep disorders diagnosis. Integrated headbox and amplifier in one small, lightweight hand-held unit.

## Easy Installation

Set-up new sleep facility or expansion within the hour, no need for expensively hard-wiring with cables.

## Untethered Sleep Monitoring

Wireless monitoring enhances patient comfort and mobility.

## Pressure-Based Airflow

Sensitive airflow measurement for PSG and CPAP titration studies (single or differential pressure).

## Perfect Fit for Sleep Research Needs

Cost-effectively meets all sleep research protocols. Portable, so clinical studies can be conducted anywhere.

## Superior Reliability

Removable SD memory card for data backup.

## Scoring and Reporting Software

View and score raw data with full PSG capable software. Customizable reporting. Easy patient record management.

## What's included

- CleveMed Soft Carrying Case
- Crystal Monitor
- Crystal Monitor Computer Unit
- USB Data Cable for Computer Unit
- Crystal Monitor User Guide
- Crystal PSG Software
- Crystal PSG User Guide
- AA Lithium Batteries
- SD Memory Card
- External Card Reader
- Button Snap 1.5 mm Safety Connector (60", pkg of 10)
- Nasal Cannula/Oral Airflow without filter (24" tube)
- Gold Cup Electrode (48", pkg of 2)
- Pulse Oximeter Finger Sensor & flexiwrap adhesive (pkg of 25)
- Pulse Oximeter Interface
- RIP Belt (pkg of 2)
- Abdominal Interface Cable
- Thoracic Interface Cable
- Snap Electrode Leads (72", pkg of 2)



## Patient unit

Dimensions: 5.3" x 3.0" x 1.0" (not including antenna)

Weight: 7.4 oz (210 g) with batteries

Power: 2 AA alkaline batteries, 12 hours continuous use

Operating Frequency:

Crystal Monitor 20-B: 2.4 GHz (ISM band)

Crystal Monitor 20-S: 902 - 928 MHz (ISM band)

Data Transmission Range: 100 feet, line of sight

Memory: Removable SD memory card

## Computer unit

Dimensions: 3" x 4" x 1.4"

Weight: 7 oz (200 g)

Power: USB

PC Interface: USB



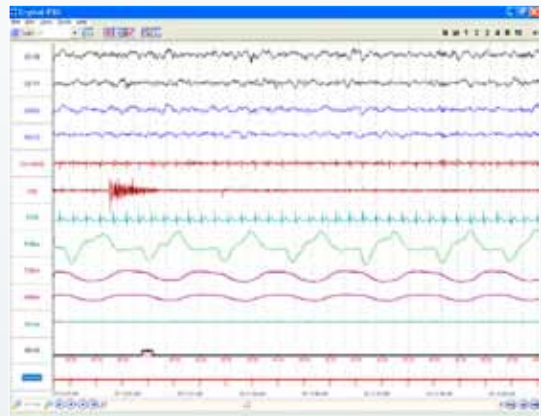
## 14 channels

- 2 EEG channels
- 2 EOG channels
- 1 chin EMG channel
- 1 ECG channel
- 1 leg EMG channel
- Thoracic Effort
- Abdominal Effort
- Body Position
- Auxiliary DC  
(blood pressure, thermistor, etc.)
- Airflow (pressure based)
- Snore (derived from airflow)
- Pulse Oximetry



## Minimum system requirements

- PC Computer with USB 2.0 port
- Microsoft® Windows XP or later
- Minimum 512 MB of RAM
- Minimum of 2 GB of disk space
- Optical (CD/DVD) Drive
- Display with 1024 x 768 resolution or higher
- Microsoft® Word



Crystal Monitor records conventional physiological signals. Sleep lab methodology with wireless monitoring.

It is always the provider's responsibility to determine coverage and submit appropriate codes, modifiers, and charges for services rendered. Contact your local insurance carrier/payer for interpretation of appropriate coverage and coding policies. | Transmission distance varies based on the operating frequency and the building architecture. | Loaner units available for customers in the U.S. | Acknowledgments: This work was supported by Small Business Innovation Research grants from the National Institutes of Health (NINDS, NHLBI, NIMH) and the Department of Defense. | Caution: Federal law restricts this device to sale by or on the order of a physician only. | Crystal PSG, Sapphire PSG, SleepScout, DreamPort, and eCrystal PSG are trademarks and Crystal Monitor, and SleepView are registered trademarks of Cleveland Medical Devices Inc., Cleveland, OH. | Sapphire PSG, Crystal Monitor, SleepScout, SleepView, and DreamPort are FDA cleared to market.



Expanding the reach of your sleep services today and tomorrow

1.877.CleveMed | 1.877.253.8363 | [www.CleveMed.com/CrystalMonitor](http://www.CleveMed.com/CrystalMonitor)

**CleveMed**

Cleveland Medical Devices Inc.