



What is SleepView?

The smallest and lightest home sleep monitor with AASM recommended guidelines. The 7 - channel SleepView is ergonomically designed for patients to perform an easy self-sleep-test at home.

Ultra-Compact

Smallest, lightest, Type III, 7 - channel home sleep monitor following the AASM recommended channel set.

Easy to Use

Ergonomically designed for patient to self-administer sleep test.

Sensor-Check

Sensor check lights to indicate proper sensor connection.

Validate Study Quality

"Smart Check" validates quality of recorded study before SleepView is returned to lab. SleepView can perform multi-night studies.

Scoring and Reporting Software

View and score raw data using full PSG capable software. Customizable reporting. Easy patient record management.

Web Portal Option Available

SleepView's HIPAA compliant Web Portal option allows seamless, secure access to patient's sleep study data, scoring and interpretation.

AASM and CMS Compliant

Generates established AHI.
Airflow by Cannula and Thermistor.

What's included

- CleveMed Soft Carrying Case
- SleepView Sleep Monitor
- SleepView User Guide
- SleepView Patient Use - DVD
- SleepView Patient Use - Hardcopy (25)
- SleepView Manager Software
- SleepView USB Data Cable
- Nasal/Oral Cannula
- PulseOx Soft Sensor
- Rip Belt
- AAA Alkaline Battery



Patient unit

Dimensions: 3" x 2.6" x 0.7"

Weight: 2 oz (57 g) (approx.) with batteries

Power: 1 AAA alkaline battery, 12 hrs continuous use

Memory: Removable SD memory card

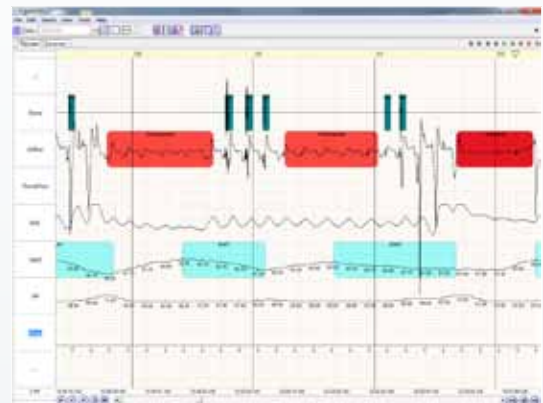


7-channel inputs

- Respiratory Effort Belt (RIP)
- Body Position
- Airflow (thermistor)
- Airflow (pressure based)
- Snore (from cannula)
- Heart Rate
- Pulse Oximetry

Minimum system requirements

- PC Computer with USB 2.0 port
- Microsoft® Windows XP or later
- Minimum 512 MB of RAM
- Minimum of 2 GB of disk space
- Optical (CD/DVD) Drive
- Display with 1024 x 768 resolution or higher
- Microsoft® Word



SleepView records conventional physiological signals. Sleep lab methodology in the home, hospital, etc.

SleepView® is manufactured by and a registered trademark of Cleveland Medical Devices Inc., licensed and distributed in the United States of America by Midmark Corporation. Learn more about Midmark SleepView at www.MidmarkSleepView.com

It is always the provider's responsibility to determine coverage and submit appropriate codes, modifiers, and charges for services rendered. Contact your local insurance carrier/payer for interpretation of appropriate coverage and coding policies. | Transmission distance varies based on the operating frequency and the building architecture. | Loaner units available for customers in the U.S. | Acknowledgments: This work was supported by Small Business Innovation Research grants from the National Institutes of Health (NINDS, NHLBI, NIMH) and the Department of Defense. | Caution: Federal law restricts this device to sale by or on the order of a physician only. | Crystal PSG, Sapphire PSG, SleepScout, DreamPort, and eCrystal PSG are trademarks and Crystal Monitor, and SleepView are registered trademarks of Cleveland Medical Devices Inc., Cleveland, OH. | Sapphire PSG, Crystal Monitor, SleepScout, SleepView, and DreamPort are FDA cleared to market.



Expanding the reach of your sleep services today and tomorrow

1.877.CleveMed | 1.877.253.8363 | www.CleveMed.com/SleepView

CleveMed

■ ■ ■ ■ Cleveland Medical Devices Inc.